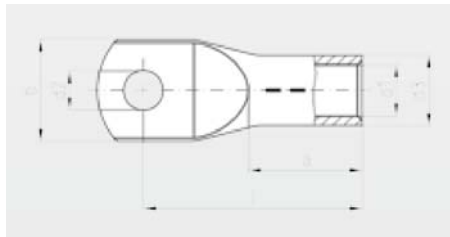


## Tubular compression cable lugs 50 – 120 mm<sup>2</sup>, DIN 46235

material: Cu according to DIN EN 13600

surface: tin plated or optionally uncoated



\* not standardized,  
tube measurements in  
accordance with DIN 46235

cross section mm <sup>2</sup>	fl t hole M	art.-no. tin plated	die code	dimensions in mm						weight 100 pcs./kg	packing unit (pcs.)	art.-no. uncoated	tool recommendation
				d1	d3	d2	b	l	a				
<b>50</b>	6*	14284	14	9,8	14,5	6,4	20	52	28	4,67	100	14684	<b>DW 6/70 140</b> <b>DW 10/120 141, MP 1 144</b> <b>MP 2 147, API 35 + HPI 35 162, HPW 15 163</b> <b>AP 10 152, HPI 10 153, API 20 156, HPI 20 157, API 30 + HPI 30 161, HPW 17 163</b>
	8	14225				8,4	20	52		5,00	100	14625	
	10	14226					10,5	22	52	4,94	100	14626	
	<b>12</b>	<b>14227</b>					13	23	52	4,91	100	14627	
	14*	14293					15	26	53,5	4,94	100	14693	
	16	14228					17	28	55,5	5,04	100	14628	
	20*	14229					21	30	61,5	5,56	100	14629	
<b>70</b>	8	14230	16	11,3	16,5	8,4	24	56	28	6,54	50	14630	
	10	14231				10,5	24	56		6,54	50	14631	
	<b>12</b>	<b>14232</b>				13	24	56,5		6,57	50	14632	
	14*	14292				15	24	55,5		6,00	50	14692	
	16	14233				17	29	57		6,92	50	14633	
	20*	14234				21	31	61		6,99	50	14634	
	<b>95</b>	8*	14235	18	13,5	19	8,4	28	65	35	9,36	50	
10		14236				10,5	28	65,5		9,55	50	14636	
<b>12</b>		<b>14237</b>				13	28	65,5		9,45	50	14637	
14*		14285				15	28	65,5		9,43	50	14685	
16		14238				17	30	65,5		9,44	50	14638	
20*		14239				21	33	71		9,86	50	14639	
<b>120</b>		8*	14282	20	15,5	21	8,4	31	70	35	11,35	50	14682
	10	14240				10,5	31	70		11,40	50	14640	
	<b>12</b>	<b>14241</b>				13	31	70,5		11,43	50	14641	
	14*	14283				15	31	70		11,41	50	14683	
	16	14242				17	31,5	70		11,36	50	14642	
	20	14243				21	36	72		11,51	50	14643	